



DEVELOPED BY:



**SHREE RSH GROUP**  
Our Commitment, Your Comfort

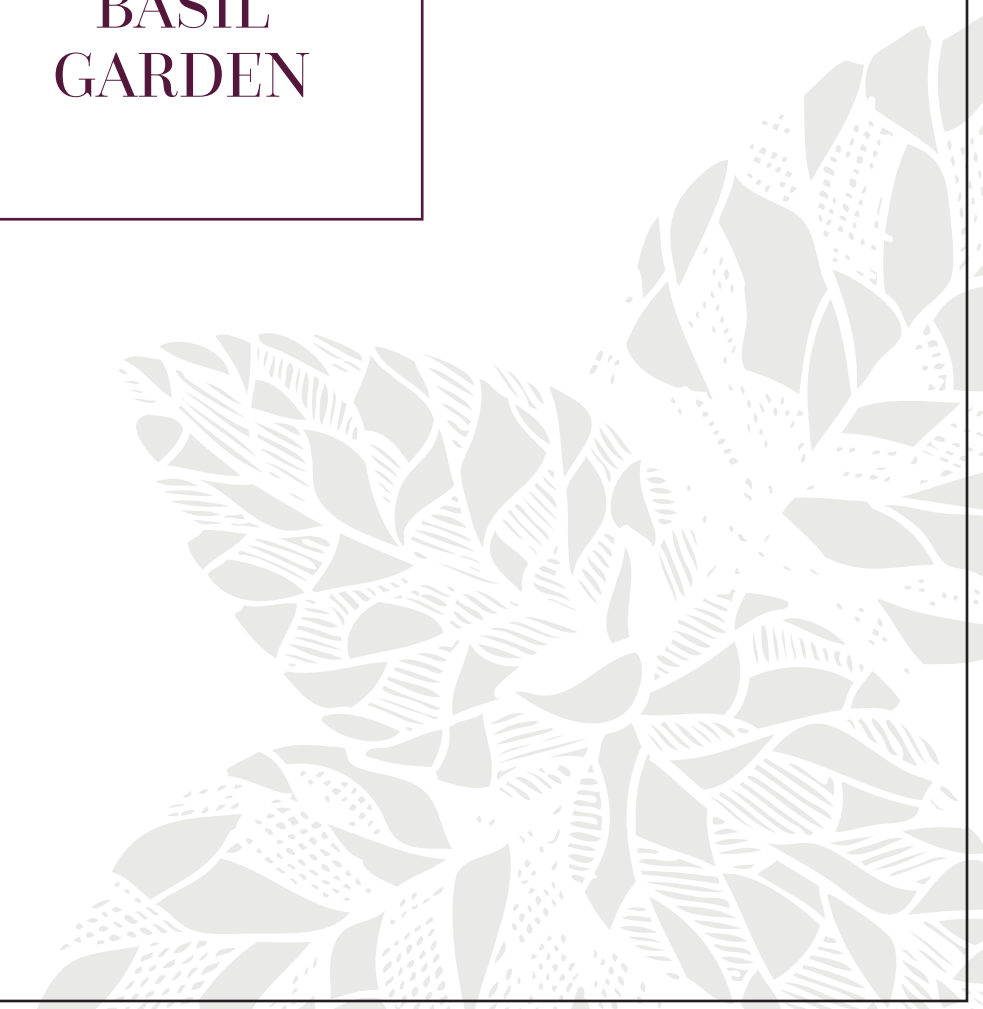
Corporate: 20 Lee Road, Kolkata 700020  
Tel: +91 33 40509999, Fax: +91 33 40509900  
Email: [info@shreershgroup.com](mailto:info@shreershgroup.com), Website: [shreershgroup.com](http://shreershgroup.com)  
Site: 33B Rowland Road, Kolkata 700020

ARCHITECT: SDB Architects

Disclaimer : This document is not a legal offering. It only describes the intent, purpose and concept of Basil Garden. All the areas/ dimensions/ layout/ elevations are only indicative and not as per scale. All the details are subject to change, alteration and modification as per the Management's discretion without any prior intimation.



# BASIL GARDEN



Imagine...

excellence



as a routine

moments  
as memories





royalty



as contemporary

home as  
**Basil Garden!**

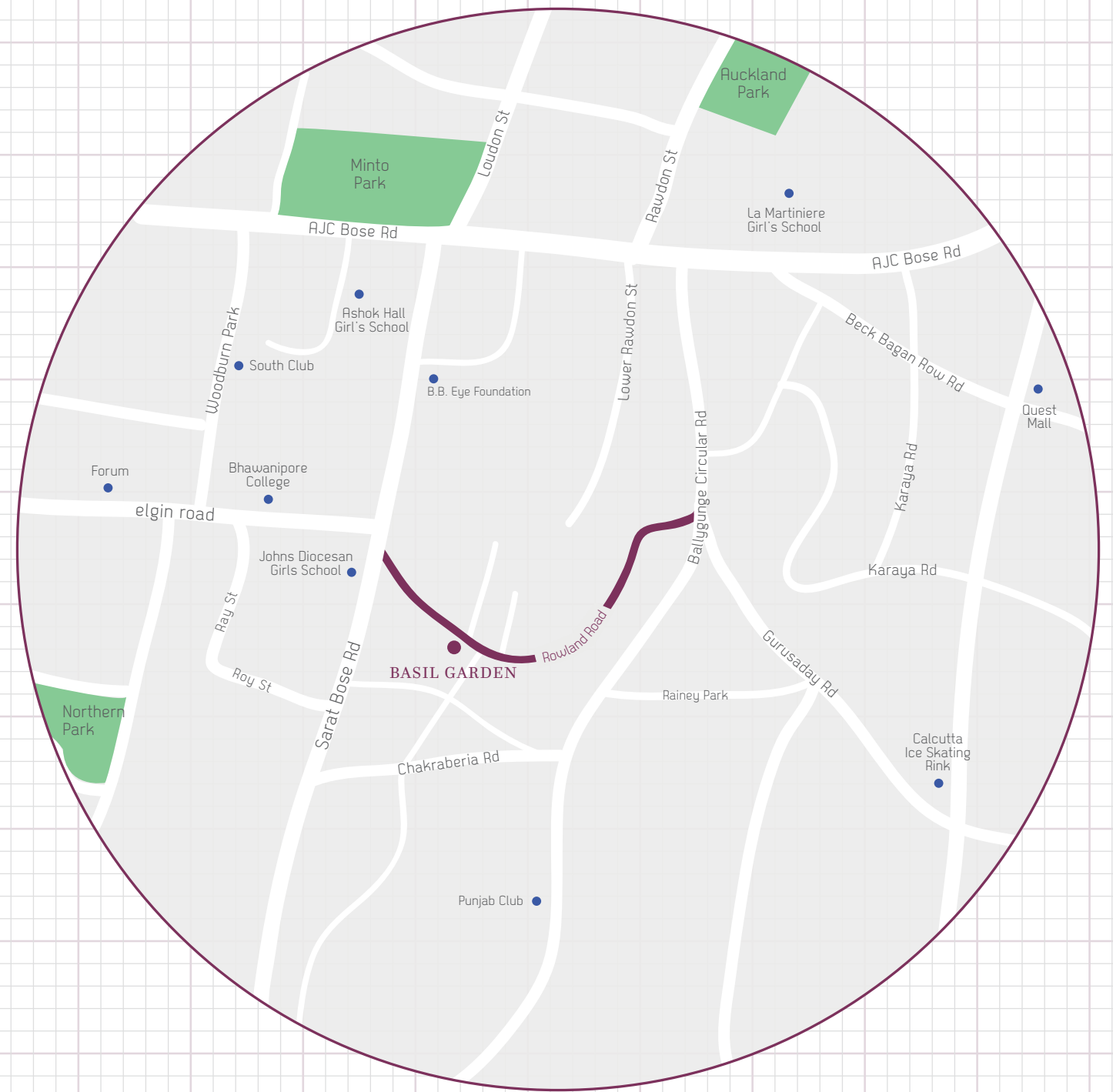




# LOCATION

Basil Garden is located at Rowland Road, Kolkata.  
Lansdowne Road and Ballygunge await you on either side.  
Forum Mall is a lazy stroll away.  
You travel easy. Reach home earlier.  
Cherish the neighbourhood that is so like you.  
What an aura! Refinement begins in the address.

## IT'S THE ADDRESS



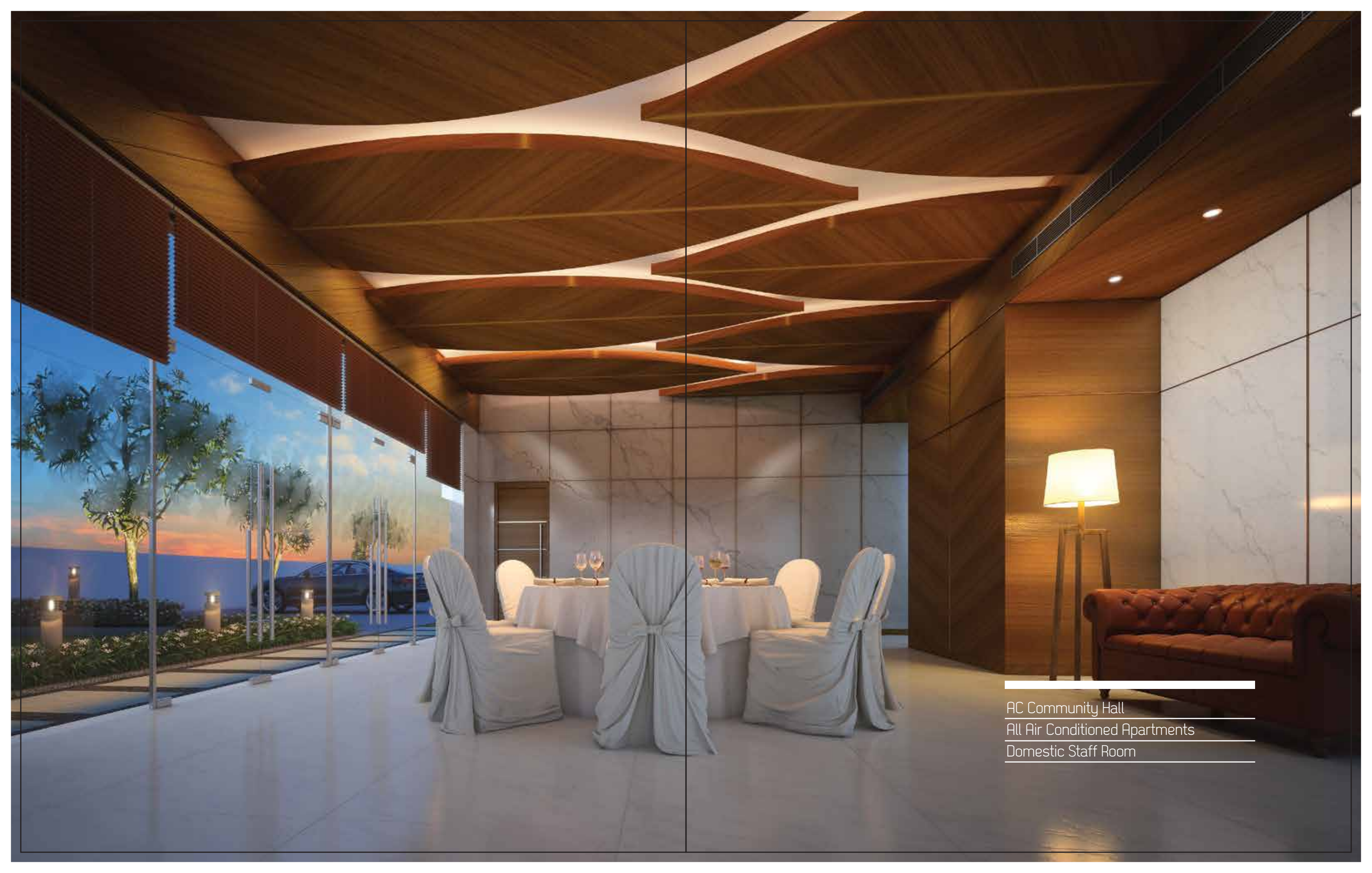


L U X  
U  
R Y

The moment you enter Basil Garden, the difference begins.  
The lobby is both glitzy and inviting. Privacy is a priority here.  
Ensured by separate rooms for household staff. High ceilings in  
every apartment signature the inherent grandness.  
Celebrate the moments at the Community Hall.

A distinct way of life, isn't it?





---

AC Community Hall  
All Air Conditioned Apartments  
Domestic Staff Room

---





World-Class Lobby  
Imposing High Ceilings





# N T A U R E

At Basil Garden, you are in a zone with superior air and environ.  
The location enables you to be less on the road.  
The time you spend in the garden - walking  
or simply easing soothes your wellness.  
Nature soon becomes a member of your family here.

It's amazing, how simple things  
can change your health and how health can  
change your life!





---

75% Open Space  
Apartments Designed for Maximum Sunlight and Air  
Landscape Garden

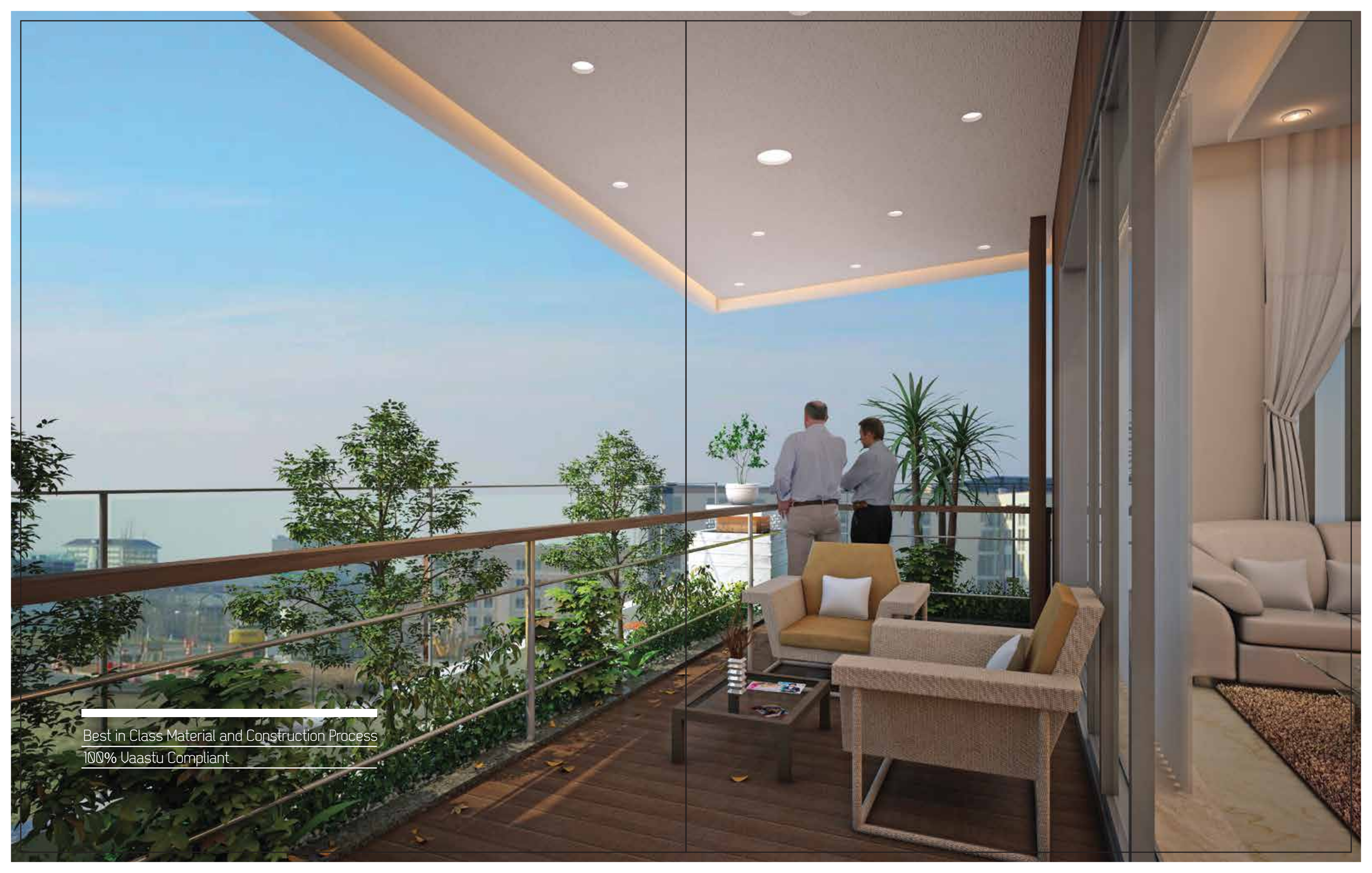
---



< C O M F O R T >  
< C O M F O R T >

The difference between a brilliant imagination and a matching reality is in the details. Great visions need greater execution. At Basil Garden, every unit of space is not just built, it's crafted with passion. From Vaastu compliance to complete safety - your lifestyle is enabled with the highest standards of comfort and security! Free Maintenance for 25 years is not just an advantage, it's a signature of reassurance.

At Basil Garden, you are truly at home!



Best in Class Material and Construction Process  
100% Vaastu Compliant





24/7 Surveillance with CCTU and Personnel  
Free Maintenance for 25 Years





# S P E C I F I C A T I O N S

- Floor to Floor height of 11.5'
- Residences fully air-conditioned (VRU)
- Italian marble flooring in living room, dining area and passage
- Large windows and open air decks finished with weather treated flooring and railings.
- Kitchens with granite counter tops, stainless steel sink and designer vitrified tiles of reputed make
- Provisions for cable and telephone connectivity
- Anti-skid tile flooring and ceramic tiles Dado up to door height
- Master bedroom finished with laminated wooden flooring
- Other bedrooms with designer vitrified tiles
- Separate Puja room finished with Italian marble
- Doors with natural teak finish height of 8 ft.
- Separate servant quarters with attached bathroom
- 2 hi-speed elevators with designer interiors
- Separate service elevator
- Fire safety equipment as per International Building Code (IBC)





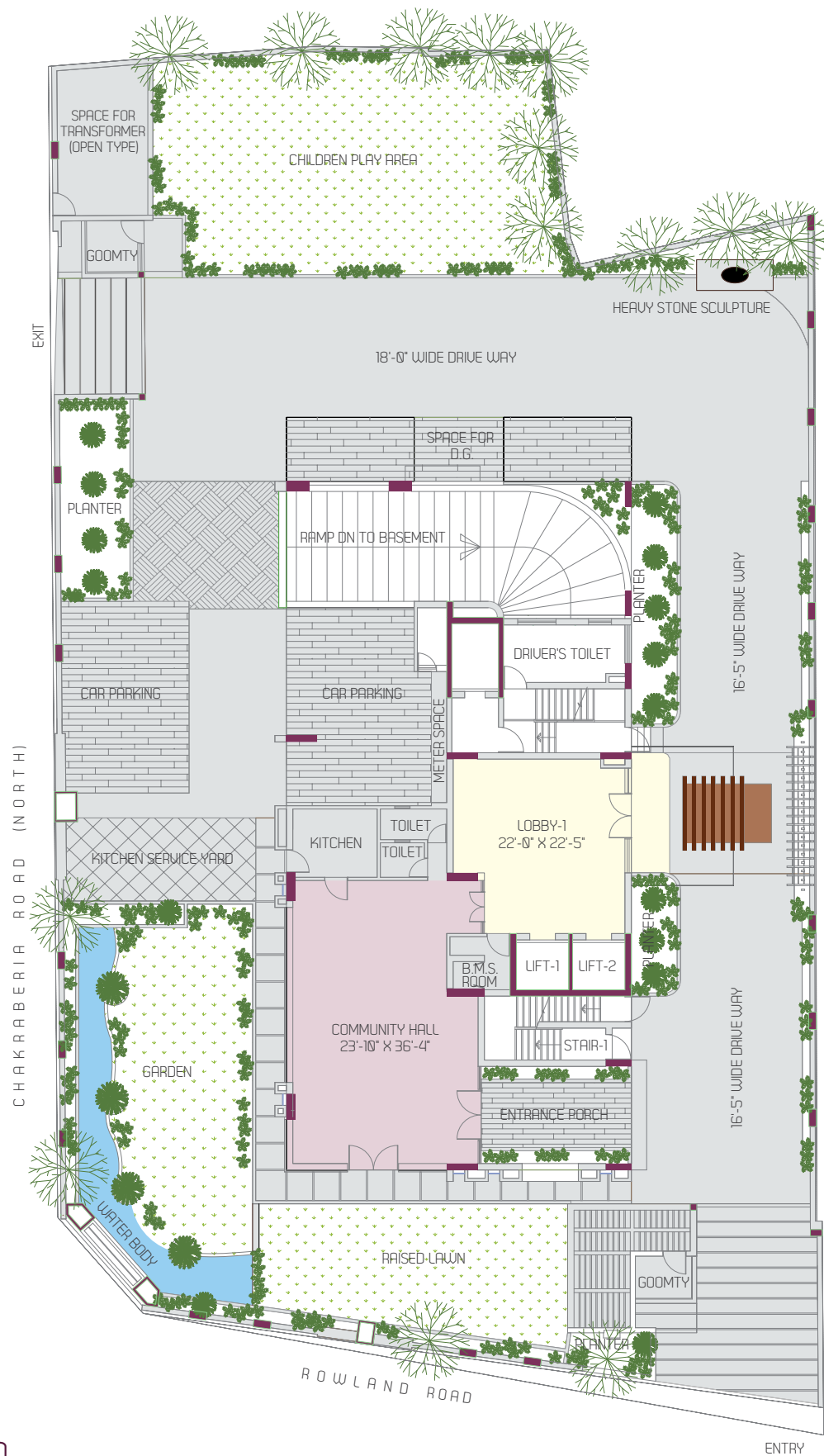
BASIL  
GARDEN

3D Model of Typical Floor Plan  
1st to 10th

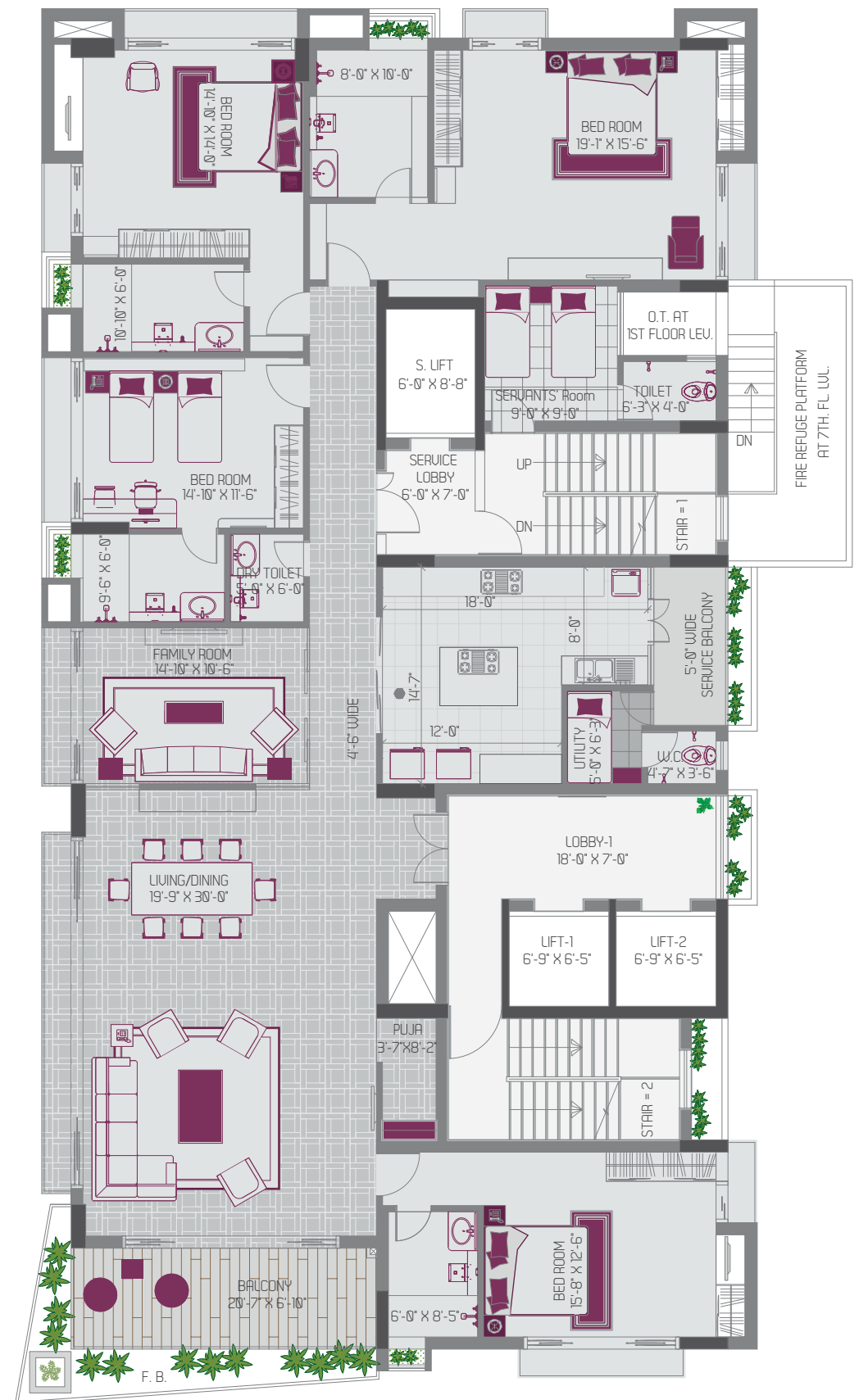




Ground Floor Plan



Typical Floor Plan  
1st to 10th  
(3577 sq.ft.)



DEVELOPER

Shree RSH Group was founded in 2010 by Hari Prasad Sharma, amongst the most admired stalwarts of the Real Estate domain in India. It is his mission to empower the life of Kolkata like never before. Enabled with a robust team of professionals - Engineers, Architects, Structural Engineers, Management Experts among others; RSH-Landmarks are setting new benchmarks in fine living.

Basil Garden is an active vision to bring international construction standards to the routine life of Kolkata!

UPCOMING PROJECTS



4A Rowland Road



RSH Signature



Palm Court

COMPLETED PROJECTS



20 Lee Road



36B Panditya Road



SN Roy Road